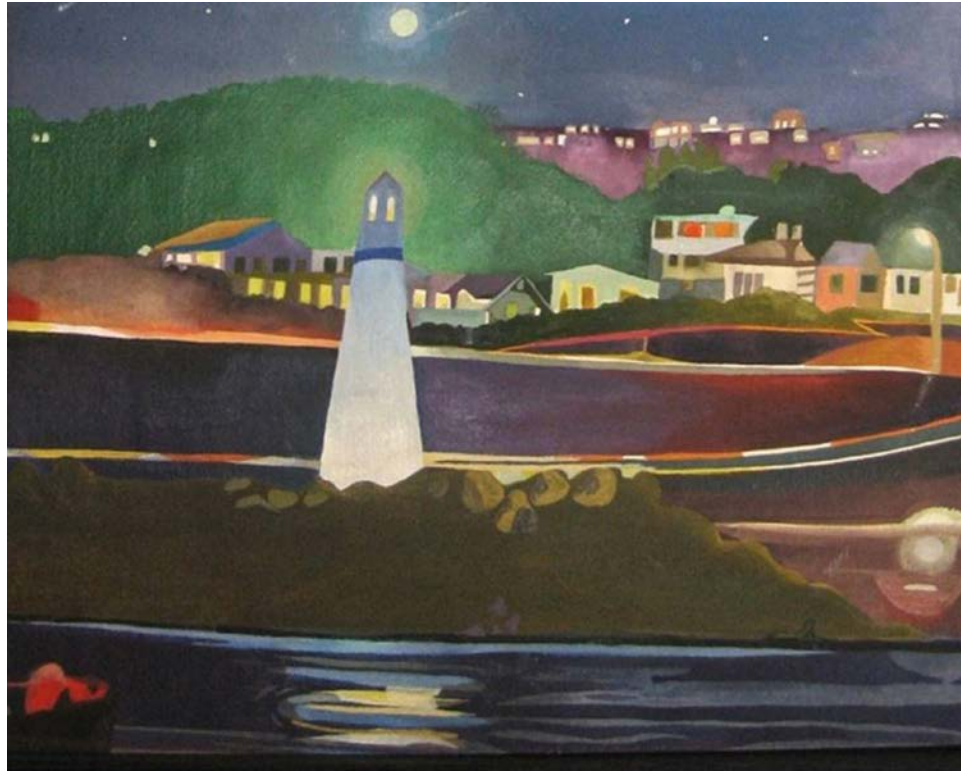


# County of Santa Cruz, California

## Adopted Budget 2016-2017



*Recommended by  
Susan A. Mauriello  
County Administrative Officer*

*Compiled by  
Edith Driscoll  
Auditor-Controller  
Treasurer-Tax Collector*

## **NATURAL RESOURCES OF SANTA CRUZ COUNTY**

Santa Cruz County is located at the north end of the Monterey Bay, along the central coast of California. The County extends from the redwood-forested mountains to rolling farmlands and wetland sloughs, with miles of beaches along the Pacific Coast.

Santa Cruz is the gateway to the Monterey Bay National Marine Sanctuary. The County has 29 miles of beaches and includes six state parks and six state beaches. The State of California owns and maintains 42,334 acres of parks in the coastal and mountainous areas of Santa Cruz County. The County maintains an additional 1,400 acres of parks, and numerous parks are also found within the cities.

The area is well-known for watersports such as sailing, surfing, fishing, diving, kayaking, and viewing marine mammals. Other popular outdoor sports include hiking, cycling, camping, rock climbing, skateboarding, birding and butterfly watching.

### **COVER PHOTO**

Built in 2001, Santa Cruz Breakwater Lighthouse, known as the Walton Lighthouse, stands 41 ½ feet tall. It is located on the west breaker marking the entrance to Santa Cruz Harbor. This structure replaced a harbor light that had marked its entrance for forty years. Charles Walton, a local businessman, contributed a significant part of the construction cost in memory of his late brother Derek Walton, who served in the merchant marines.

The Walton Lighthouse can be seen from Twin Lakes State Beach, a popular mile-long shoreline.

Photo by Vanessa Stafford, Santa Cruz, California

Vanessa is a resident of Santa Cruz who is passionate about artfully combining architectural structures with plants using scenes from this area.

## PREFACE

Dear Citizens:

This is the adopted budget for the County of Santa Cruz as compiled by the County Auditor-Controller-Treasurer-Tax Collector.

This adopted budget document is the spending plan for fiscal year 2016-2017. A brief description of the contents follows:

- ◆ Budget Introduction presents a budget overview and narrative descriptions of the various organizations represented in the budget.
- ◆ Schedule 1 is a summary of all funds', including enterprise funds and internal service funds', financing requirements, both sources and uses, summarized by fund type.
- ◆ Schedules 2 and 12 are summaries of the governmental and special district funds' financing requirements, both sources and uses.
- ◆ Schedules 3 and 13 show the carry over fund balances available for financing the current year budget. They represent the unexpended balance available from the previous year.
- ◆ Schedules 4 and 14 reflect the reserve requirements of the various funds.
- ◆ Schedule 5 (page 1) shows the summary of additional financing sources by revenue object. Schedule 5 (page2) summarizes additional financing sources by fund types.
- ◆ Schedule 6 shows the financing sources by line item detail for each of the general government operations by fund and source.
- ◆ Schedule 7 is a recap of budget uses by function and fund for general government operations.
- ◆ Schedule 8 shows the detail of budget uses by function and fund for general government operations.
- ◆ Schedules 9 and 15 show the financing uses and sources detail line item for each general government operation and special purpose district.
- ◆ Schedule 10 reflects the operations of internal service funds.
- ◆ Schedule 11 reflects the operations of enterprise funds.

Sincerely yours,

|             |                  |                                     |
|-------------|------------------|-------------------------------------|
| Chairperson | Bruce McPherson, | Supervisor 5 <sup>th</sup> District |
|             | John Leopold,    | Supervisor 1 <sup>st</sup> District |
|             | Zach Friend,     | Supervisor 2 <sup>nd</sup> District |
|             | Ryan Coonerty,   | Supervisor 3 <sup>rd</sup> District |
|             | Greg Caput,      | Supervisor 4 <sup>th</sup> District |



# COUNTY OF SANTA CRUZ

## 2016-2017 Adopted Budget

### Table of Contents

|  | Organizational<br>Reference | Page |
|--|-----------------------------|------|
| PREFACE  |                             |      |
| TABLE OF CONTENTS  |                             |      |
| BUDGET INTRODUCTION  |                             | i    |
| COUNTY FUND SUMMARIES  |                             |      |
| Schedule 1 - All Funds Summary   |                             | 1    |
| Schedule 2 - Governmental Funds Summary                                      |                             | 2    |
| Schedule 3 - Fund Balance – Governmental Funds                               |                             | 3    |
| Schedule 4 – Obligated Fund Balances – Governmental Funds                    |                             | 4    |
| Schedule 5 - Summary of Additional Financing Sources by Source and Fund      |                             | 5    |
| Schedule 6 - Detail of Additional Sources by Fund and Account                |                             | 7    |
| Schedule 7 - Summary of Financing Uses by Function and Fund                  |                             | 24   |
| Schedule 8 - Detail of Financing Uses by Function, Activity, and Budget Unit |                             | 26   |
| COUNTY BUDGET DETAIL SCHEDULE 9 – DETAIL OF FINANCING SOURCES AND USES       |                             |      |
| COUNTY DEPARTMENTAL  |                             |      |
| Agricultural Commission & Wts & Measures - Department 3                      |                             |      |
| Agricultural Commissioner  | 03/20/00                    | 31   |
| Weights and Measures   | 03/30/00                    | 33   |
| Staffing for Mosquito Abatement  | 03/40/00                    | 35   |
| Agricultural Extension - Department 6  | 06/00/00                    | 37   |
| Assessor - Department 9  | 09/00/00                    | 38   |
| Auditor-Controller - Department 12   | 12/00/00                    | 40   |
| Board of Supervisors - Department 15   | 15/00/00                    | 42   |
| County Administrative Office-Clerk of the Board- Department 18               | 18/00/00                    | 43   |
| County Clerk/Elections - Department 21                                       | 21/40/00                    | 45   |
| County Recorder - Department 23  | 23/00/00                    | 47   |
| County Counsel - Department 24   | 24/00/00                    | 49   |
| Child Support Services - Department 25                                       | 25/00/00                    | 51   |
| District Attorney/Public Administration - Department 27                      | 27/00/00                    | 53   |
| Office of Emergency Services - Department 30                                 |                             |      |
| Office of Emergency Services   | 30/20/00                    | 56   |
| Communications - Office of Emergency Services                                | 30/30/00                    | 57   |
| County Fire Service - Office of Emergency Services                           | 30/40/00                    | 58   |
| General Services - Department 33   |                             |      |
| General Services   | 33/10/00                    | 61   |
| Facilities Management  | 33/30/00                    | 63   |
| Purchasing   | 33/40/10                    | 66   |
| Central Stores   | 33/40/20                    | 67   |
| Grand Jury - Department 35   | 35/00/00                    | 68   |
| Health Services Agency - Department 36                                       | 36/00/00                    | 69   |

# COUNTY OF SANTA CRUZ

## 2016-2017 Adopted Budget

### Table of Contents

|  | Organizational Reference | Page |
|--|--------------------------|------|
| Human Services Department - Department 39                |                          |      |
| Workforce  | 39/10/60                 | 76   |
| Social Services  | 39/20/10                 | 77   |
| Categorical Aids   | 39/20/20                 | 80   |
| General Assistance                                       | 39/20/30                 | 81   |
| Family Relations   | 39/20/40                 | 82   |
| Veterans' Service  | 39/30/00                 | 83   |
| Community Services                                       | 39/50/00                 | 85   |
| Technical Radio Services 43                              | 43/00/00                 | 87   |
| County Contributions to Courts - Department 45           | 45/00/00                 | 89   |
| Parks, Open Spaces and Cultural Services - Department 49 | 49/00/00                 | 91   |
| Personnel - Department 51                                |                          |      |
| Personnel  | 51/00/00                 | 94   |
| Risk Management - Liability                              | 51/50/20                 | 96   |
| Planning - Department 54                                 | 54/00/00                 | 97   |
| Probation - Department 57                                |                          |      |
| Juvenile Hall  | 57/20/00                 | 100  |
| Probation  | 57/40/00                 | 102  |
| State Correctional Schools                               | 57/60/00                 | 105  |
| Care of Court Wards                                      | 57/70/00                 | 106  |
| Public Defender - Department 59                          | 59/00/00                 | 107  |
| Public Works - Department 60                             |                          |      |
| Public Works Real Estate                                 | Fund 10-900              | 108  |
| Public Works Roads Surveyor                              | Fund 10-901              | 109  |
| Public Works Live Oak Parking                            | Fund 10-902              | 110  |
| Public Works Construction Insp                           | Fund 10-903              | 111  |
| Publics Works Engineering                                | Fund 10-904              | 112  |
| Public Works Transportation                              | Fund 21-220              | 113  |
| Public Works Road Fund                                   | Fund 25                  | 114  |
| Road Fund Projects Schedule                              |                          | 115  |
| Sheriff-Coroner - Department 66                          |                          |      |
| Sheriff-Coroner  | 66/10/00                 | 118  |
| Sheriff-Coroner Burial of Indigents                      | 66/10/50                 | 122  |
| Detention  | 66/20/00                 | 123  |
| Court Security   | 66/40/00                 | 126  |
| Treasurer-Tax Collector - Department 73                  | 73/00/00                 | 127  |
| <br>   |                          |      |
| CUSTODIAL FUNDS - DEPARTMENT 13                          |                          |      |
| Auditor-Controller Oversight                             |                          |      |
| Finance  | 13/12/20                 | 129  |
| Debt Service - Certificates of Participation             | 13/12/15                 | 131  |
| Debt Service - TRAN                                      | 13/12/17                 | 132  |
| Reserves - Contingencies                                 | 13/13/25                 | 133  |

# COUNTY OF SANTA CRUZ

## 2016-2017 Adopted Budget

### Table of Contents

|   | Organizational<br>Reference | Page            |
|---|-----------------------------|-----------------|
| <b>County Administrative Officer Oversight</b>            |                             |                 |
| Health and Safety, Air Pollution                          | 13/18/10                    | 134             |
| Public Protection, Animal Shelter                         | 13/18/20                    | 135             |
| Public Protection, Assn of Monterey Bay Area Govn         | 13/18/30                    | 136             |
| Public Protection, Local Agency Formation Commission      | 13/18/45                    | 137             |
| Education, Library  | 13/18/55                    | 138             |
| <b>Parks, Open Spaces and Cultural Services Oversight</b> |                             |                 |
| Art in Public Places                                      | 13/49/35                    | 139             |
| Cultural Services   | 13/49/45                    | 140             |
| <b>Planning Oversight</b>                                 |                             |                 |
| Fish and Game Fund  | Fund 21-225                 | 13/54/20<br>141 |
| Housing   | Fund 21-025                 | 13/54/30<br>142 |
| Housing-LMIH Asset Fund                                   | Fund 21-030                 | 13/54/30<br>143 |
| Housing-Other   | Fund 21-031                 | 13/54/30<br>144 |
| Housing-RDA CDBG RDA                                      | Fund 21-026                 | 13/61/01<br>145 |
| Housing-Subdiv In-Lieu                                    | Fund 21-027                 | 13/61/00<br>146 |
| Housing-Paloma Del Mar                                    | Fund 21-028                 | 13/61/01<br>147 |
| Housing-Home Grant Fund                                   | Fund 21-029                 | 13/61/01<br>148 |

#### PLANT INCLUDING PARK DEDICATION - DEPARTMENT 19

|                    | Fund/Subfund    |     |
|--------------------|-----------------|-----|
| Plant Acquisition  | 19/00/00 10/000 | 149 |
| La Selva I-01      | 19/00/00 21/120 | 150 |
| Aptos I-02         | 19/00/00 21/125 | 151 |
| Live Oak I-03      | 19/00/00 21/130 | 152 |
| Pajaro I-04        | 19/00/00 21/135 | 153 |
| San Andreas II-05  | 19/00/00 21/140 | 154 |
| Carbonera II-06    | 19/00/00 21/145 | 155 |
| Soquel II-07       | 19/00/00 21/150 | 156 |
| San Lorenzo II-08  | 19/00/00 21/155 | 157 |
| Aptos Hills III-09 | 19/00/00 21/160 | 158 |
| Skyline III-10     | 19/00/00 21/165 | 159 |
| Summit III-11      | 19/00/00 21/170 | 160 |
| Eureka III-12      | 19/00/00 21/175 | 161 |
| North Coast III-13 | 19/00/00 21/180 | 162 |
| Bonny Doon III-14  | 19/00/00 21/185 | 163 |
| Salsipuedes III-15 | 19/00/00 21/190 | 164 |
| Alba Rec           | 19/00/00 21/195 | 165 |
| Boulder Creek Rec  | 19/00/00 21/200 | 166 |
| La Selva Rec       | 19/00/00 21/205 | 167 |
| Opal Rec           | 19/00/00 21/210 | 168 |
| CERTS Reserve      | 19/00/00 21/215 | 169 |
| Fund Interest      | 19/00/00 21/216 | 170 |
| State Park Bonds   | 19/00/00 21/310 | 171 |

# COUNTY OF SANTA CRUZ

## 2016-2017 Adopted Budget

### Table of Contents

|  | Organizational<br>Reference | Page |
|--|-----------------------------|------|
| <b>CAPITAL PROJECTS</b>                                      |                             |      |
| <b>CAPITAL PROJECTS FUND 40-100</b>                          |                             |      |
| Budget Summary   |                             | 173  |
| Revenue Sources by Project                                   |                             | 174  |
| Rebudgeted Estimated Revenue Detail                          |                             | 175  |
| Expenditure Requirements by Project                          |                             | 176  |
| <b>MEASURE E FUND 40-400</b>                                 |                             |      |
| Budget Summary   |                             | 177  |
| Expenditure Requirements by Project                          |                             | 178  |
| <b>CAPITAL IMPROVEMENT FUND 42-100</b>                       |                             |      |
| Budget Summary   |                             | 179  |
| Revenue Sources by Project                                   |                             | 180  |
| Expenditure Requirements by Project                          |                             | 181  |
| <b>CAPITAL PROJECTS VARIOUS FUND 43-100</b>                  |                             |      |
| Budget Summary   |                             | 182  |
| Revenue Sources by Project                                   |                             | 183  |
| Expenditure Requirements by Project                          |                             | 184  |
| <b>CAPITAL PROJECTS PARKS SPECIAL FUND 49</b>                |                             |      |
| Budget Summary by Project                                    |                             | 185  |
| <b>SUMMARY OF ALLOWED POSITIONS</b>                          |                             |      |
| Summary of Allowed Positions                                 |                             | 187  |
| Allowed, Recommended & Approved Positions                    |                             | 188  |
| Salary Ranges  |                             | 207  |
| <b>INTERNAL SERVICE FUNDS</b>                                |                             |      |
| <b>CORRELATION OF SCHEDULE 10 TO SCHEDULE 9 BUDGETS</b>      |                             | 217  |
| <b>INTERNAL SERVICE FUNDS - SCHEDULE 9</b>                   |                             |      |
| General Services Fleet Operations - Department 33            | 33/35/00                    | 219  |
| Information Services Administration- Department 42           | 42/10/00                    | 221  |
| Information Services Telephone - Department 42               | 42/20/00                    | 223  |
| Information Services Duplication - Department 42             | 42/30/00                    | 225  |
| Information Services Technical Support - Department 42       | 42/40/00                    | 227  |
| Personnel Employee Relations Benefits - Department 51        | 51/10/10                    | 229  |
| Personnel Risk Management -Staffing - Department 51          | 51/50/10                    | 230  |
| Personnel Liability and Property Insurance - Department 51   | 51/50/20                    | 232  |
| Personnel Workers Comp Self Insurance - Department 51        | 51/50/30                    | 234  |
| Personnel State Unemployment Insurance - Department 51       | 51/50/40                    | 235  |
| Personnel Risk Management and Self Insurance - Department 51 | 51/50/50                    | 236  |
| Public Works Administration - Department 60                  | 60/00/00                    | 237  |



# COUNTY OF SANTA CRUZ

## 2016-2017 Adopted Budget

### Table of Contents

|  | Organizational<br>Reference | Page |
|--|-----------------------------|------|
| <b>INTERNAL SERVICE FUNDS - SCHEDULE 10</b>                                  |                             |      |
| General Services Fleet Operations Service Center                             |                             | 239  |
| Information Services   |                             | 241  |
| Information Services Central Duplicating                                     |                             | 243  |
| Personnel Dental Health Insurance  |                             | 245  |
| Personnel Risk Management and Self Insurance                                 |                             | 246  |
| Personnel Liability and Property Insurance                                   |                             | 248  |
| Personnel Workers Comp Self Insurance  |                             | 249  |
| Personnel State Unemployment Insurance                                       |                             | 250  |
| Personnel Employee Benefits-Staffing   |                             | 251  |
| Public Works   |                             | 252  |
| <br>   |                             |      |
| <b>ENTERPRISE FUNDS – SCHEDULE 11</b>  |                             |      |
|  | <b>Fund/Subfund</b>         |      |
| Boulder Creek CSA 7  | 50/105                      | 255  |
| County Disposal Sites CSA 9C Capital Improvements                            | 50/110                      | 256  |
| Ben Lomond Closure   | 50/120                      | 257  |
| Buena Vista Closure  | 50/121                      | 258  |
| Davenport Sanitation   | 50/125                      | 259  |
| Davenport Davis-Grunsky Loan   | 33/155                      | 260  |
| Freedom Co Sanitation  | 50/130                      | 261  |
| Freedom Co Sanitation Expansion Construction                                 | 50/140                      | 262  |
| Graham Hill CSA 57   | 50/141                      | 263  |
| Place De Mer CSA #2  | 50/143                      | 264  |
| Rolling Woods CSA 10   | 50/170                      | 265  |
| Sand Dollar CSA 5  | 50/200                      | 266  |
| SC Septic Tank Maintenance CSA 12 General                                    | 50/215                      | 267  |
| SC Septic Tank Maintenance CSA 12 Capital Improvements                       | 50/220                      | 268  |
| SC Septic Tank Maintenance CSA 12 Zone A                                     | 50/225                      | 269  |
| Summit West CSA 54   | 50/226                      | 270  |
| Trestle Beach CSA 20   | 50/230                      | 271  |
| <br>   |                             |      |
| <b>SPECIAL DISTRICT FUND SUMMARY SCHEDULES</b>                               |                             |      |
| Schedule 12 - Special Districts and Other Agencies Summary                   |                             | 273  |
| Schedule 13 - Fund Balance - Special Districts and Other Agencies            |                             | 275  |
| Schedule 14 - Special Districts and Other Agencies – Obligated Fund Balances |                             | 277  |
| <br>   |                             |      |
| <b>SPECIAL DISTRICT BUDGETS</b>  |                             |      |
| <b>SPECIAL DISTRICT BUDGETS - SCHEDULE 15 - PUBLIC PROTECTION</b>            |                             |      |
| CSA #48 - County Fire Protection   | 304400                      | 279  |
| Extended Police Protection CSA#38  | 136601                      | 280  |
| Pajaro St Drain Maint Dist   | 622245                      | 281  |
| CSA #4 - Pajaro Dunes  | 304300                      | 282  |
| SC Flood Control & Water Conservation Zone 4 (EH)                            | 135461                      | 284  |
| SC Flood Control & Water Conservation Zone 5                                 | 622350                      | 286  |

# COUNTY OF SANTA CRUZ

## 2016-2017 Adopted Budget

### Table of Contents

|   | Organizational<br>Reference | Page |
|---|-----------------------------|------|
| SC Flood Control & Water Conservation                                 | 135462                      | 287  |
| SC Flood Control & Water Conservation Zone 8                          | 622360                      | 289  |
| SC Flood Control & Water Conservation Zone 5 Exp. Constr.             | 622365                      | 290  |
| SC Flood Control & Water Conservation Zone 6                          | 622375                      | 291  |
| SC Flood Control & Water Conservation Zone 7                          | 622380                      | 292  |
| SC Flood Control & Water Conservation Zone 7A                         | 622385                      | 293  |
| <b>SPECIAL DISTRICT BUDGETS - SCHEDULE 15 - HEALTH AND SANITATION</b> |                             |      |
| Mosquito Abatement CSA #53  | 130320                      | 295  |
| Mosquito Abatement CSA #53 - North                                    | 130321                      | 296  |
| Pasatiempo/Rolling Woods Sewer District                               | 136076                      | 297  |
| <b>SPECIAL DISTRICT BUDGETS - SCHEDULE 15 - RECREATION</b>            |                             |      |
| CSA # 11-Parks and Recreation   | 134910                      | 299  |
| <b>SPECIAL DISTRICT BUDGETS - SCHEDULE 15 - ROADS</b>                 |                             |      |
| Aptos Seascapes CSA 3   | 622100                      | 301  |
| Braemoor CSA 47   | 622105                      | 302  |
| Co Hwy Safety Serv Area 9   | 622115                      | 303  |
| Co Hwy Safety Serv Area 9 Zone A                                      | 622120                      | 305  |
| Co Hwy Safety Serv Area 9 Zone B                                      | 622125                      | 306  |
| Co Road Maintenance CSA 9D Zone 1                                     | 622130                      | 307  |
| Co Road Maintenance CSA 9D Zone 2                                     | 622135                      | 308  |
| Co Road Maintenance CSA 9D Zone 3                                     | 622140                      | 309  |
| Streetscape - CSA #9E   | 136105                      | 310  |
| Country Estates CSA 35  | 622145                      | 311  |
| Empire Acres CSA 17   | 622150                      | 312  |
| Bonita Encino CSA 43  | 622160                      | 313  |
| Forest Glen CSA 36  | 622165                      | 314  |
| Felton Grove CSA 56   | 622166                      | 315  |
| Glenwood Acres CSA #30  | 622170                      | 316  |
| Hidden Valley CSA 26  | 622180                      | 317  |
| Hopkins Gulch CSA 51  | 622185                      | 318  |
| Huckleberry Woods Rd Maint CSA 15                                     | 622190                      | 319  |
| Hutchinson Rd CSA 13  | 622195                      | 320  |
| Oakflat Road CSA 13A  | 622200                      | 321  |
| Kelly Hill CSA 22   | 622210                      | 322  |
| Larsen Rd CSA #34   | 622215                      | 323  |
| Loma Prieta CSA 41  | 622220                      | 324  |
| Lomond Terrace CSA #28  | 622225                      | 325  |
| McGaffigan Mill Road CSA 59   | 622231                      | 326  |
| Old Ranch Rd CSA 23   | 622240                      | 327  |
| Pinecrest CSA 46  | 622265                      | 328  |
| Pineridge CSA #24   | 622275                      | 329  |
| Ralston Way CSA 40  | 622285                      | 330  |

# COUNTY OF SANTA CRUZ

## 2016-2017 Adopted Budget

### Table of Contents

|   | Organizational<br>Reference | Page |
|---|-----------------------------|------|
| Redwood Dr CSA #33  | 622300                      | 331  |
| Reed Street CSA 39  | 622305                      | 332  |
| Roberts Rd CSA 37   | 622310                      | 333  |
| Ridge Drive CSA # 58  | 622312                      | 334  |
| Riverdale Park Road CSA 55  | 622317                      | 335  |
| Robak Dr CSA 16   | 622320                      | 336  |
| Sunlit Ln CSA 42  | 622400                      | 337  |
| Sunbeam Woods CSA 44  | 622405                      | 338  |
| Vineyard CSA #50  | 622410                      | 339  |
| View Circle CSA #32   | 622420                      | 340  |
| Viewpoint Rd CSA #25  | 622425                      | 341  |
| Upper Pleasant Valley 52  | 622435                      | 342  |
| Westdale Dr CSA 21  | 622440                      | 343  |
| Whitehouse CSA #18  | 622445                      | 344  |
| <b>SPECIAL DISTRICT BUDGETS - SCHEDULE 15 - REDEVELOPMENT SUCCESSOR AGENCY</b>                |                             |      |
| RDA Admin - LO/SOQ RDA-Capital Project  | 610110                      | 345  |
| RDA Administration - Property Management  | 610115                      | 346  |
| RDA Capital Projects Fund   | 611100                      | 347  |
| RDA Capital Projects Schedule   |                             | 348  |
| RDA Low & Mod Income Housing  | 612200                      | 349  |
| CO RDA S/A Tax Increment-Cap Proj   | 136110                      | 350  |
| CO RDA S.A Tax Increment-LMIH   | 136120                      | 351  |
| Soquel Village Parking Improvement  | 136196                      | 352  |
| <b>APPENDIX</b>   |                             |      |
| Adopt Budget Actions for 2016-2017 Fiscal Year  |                             | 353  |
| Exhibit A - Resolution Adopting the Adopted Budget  |                             | 355  |
| Exhibit B - Funds Requiring Budgetary Changes in Appropriations<br>Due to Available Financing |                             | 357  |
| Exhibit C - Resolution Establishing Fiscal Year 2016-2017 Appropriation Limit                 |                             | 358  |
| B - Attachment 1 - Calculation of Appropriations Subject to<br>Limitation 2016-2017           |                             | 360  |
| B - Attachment 2 - Board of Supervisors Governed Districts Appropriation<br>Limitations       |                             | 361  |
| Exhibit D - Resolutions Accepting Unanticipated Revenue                                       |                             | 362  |
| D - Ratification of 2015-2016 Yearend AUD74 Budget Transfers                                  |                             | 374  |
| 2015-2016 Encumbrance Balances Rebudgeted for 2016-2017                                       |                             | 376  |
| 2016-2017 Tax Rates   |                             | 380  |
| Resolution Fixing 2016-2017 Tax Rates   |                             | 381  |
| Exhibit A - 2016-2017 Secured Tax Rates   |                             | 382  |
| Board Governed Districts Annual Charges   |                             | 384  |
| Expenditures Agreements to be Renewed for Fiscal Year 2016-2017                               |                             | 390  |
| Revenue Agreements to be Renewed for Fiscal Year 2016-2017                                    |                             | 399  |