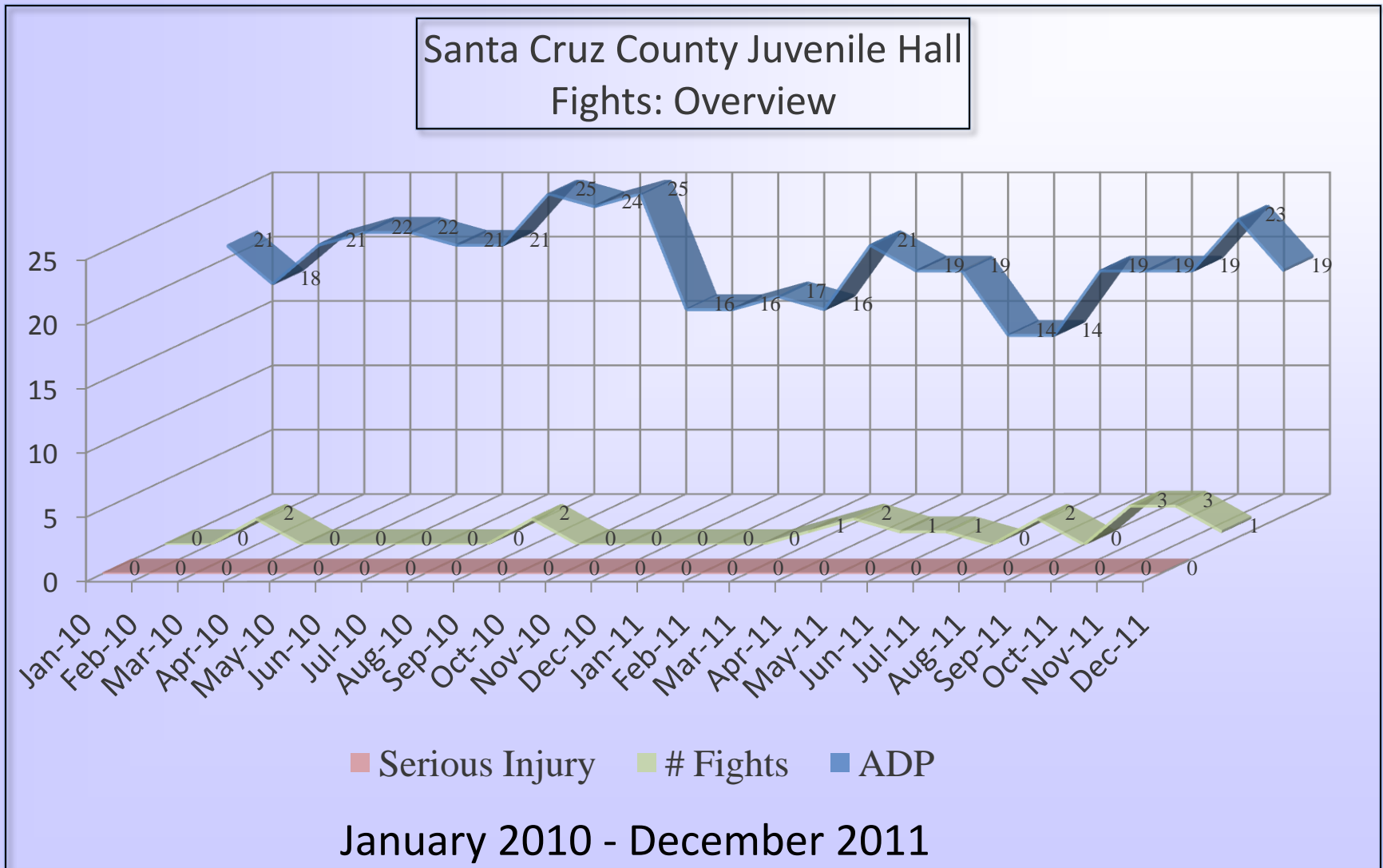
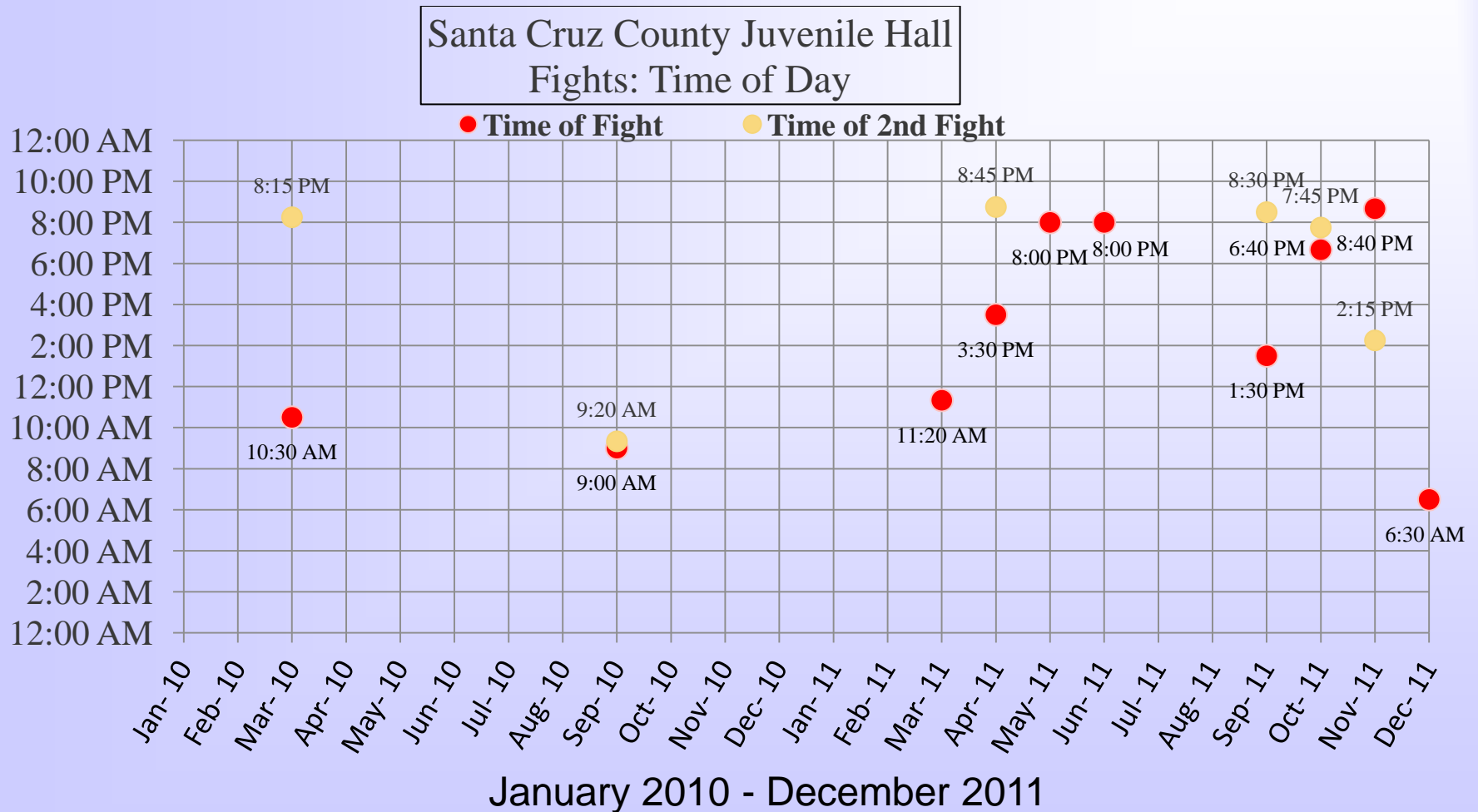


SANTA CRUZ COUNTY JUVENILE HALL PERFORMANCE MEASURES

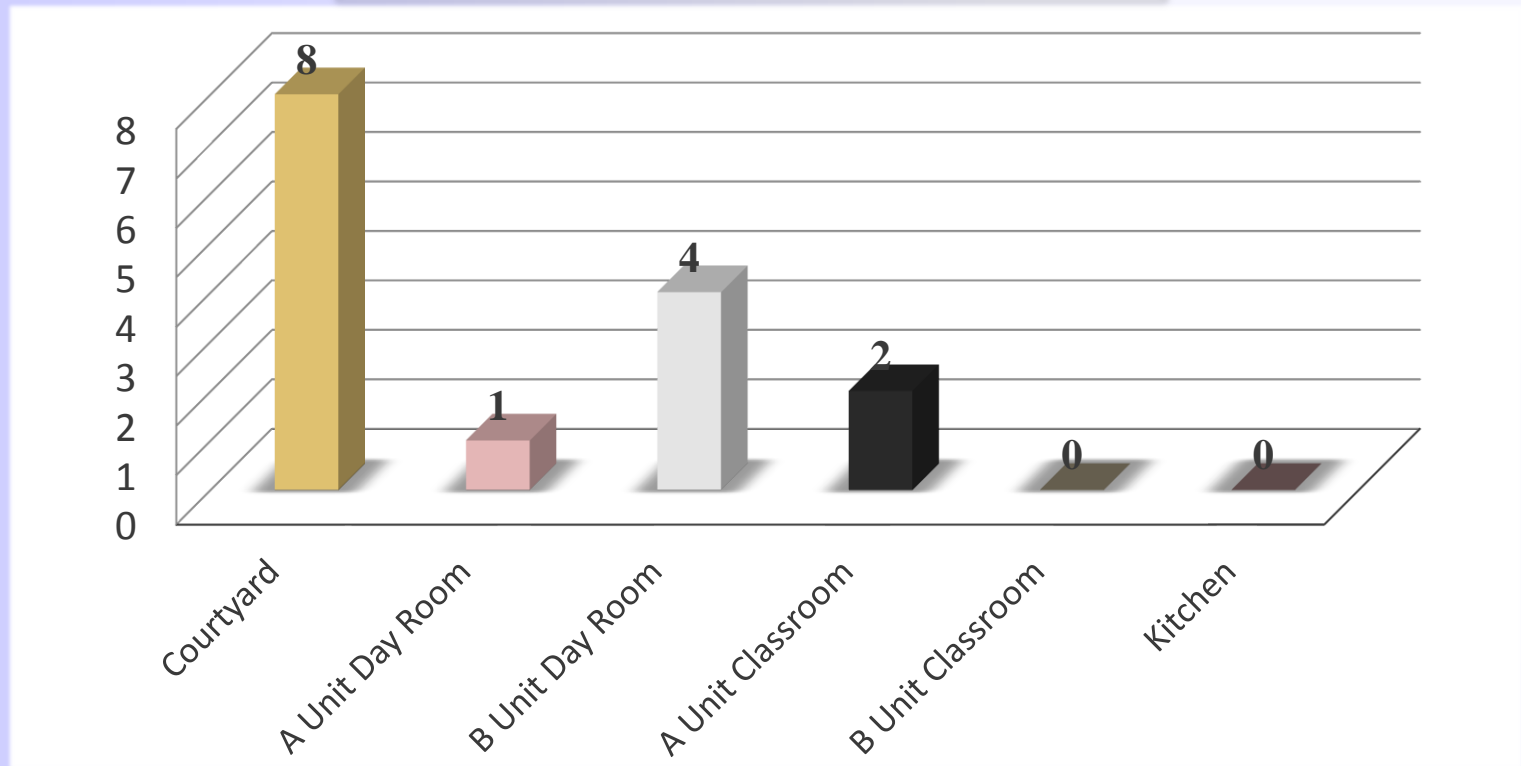


SANTA CRUZ COUNTY JUVENILE HALL PERFORMANCE MEASURES



SANTA CRUZ COUNTY JUVENILE HALL PERFORMANCE MEASURES

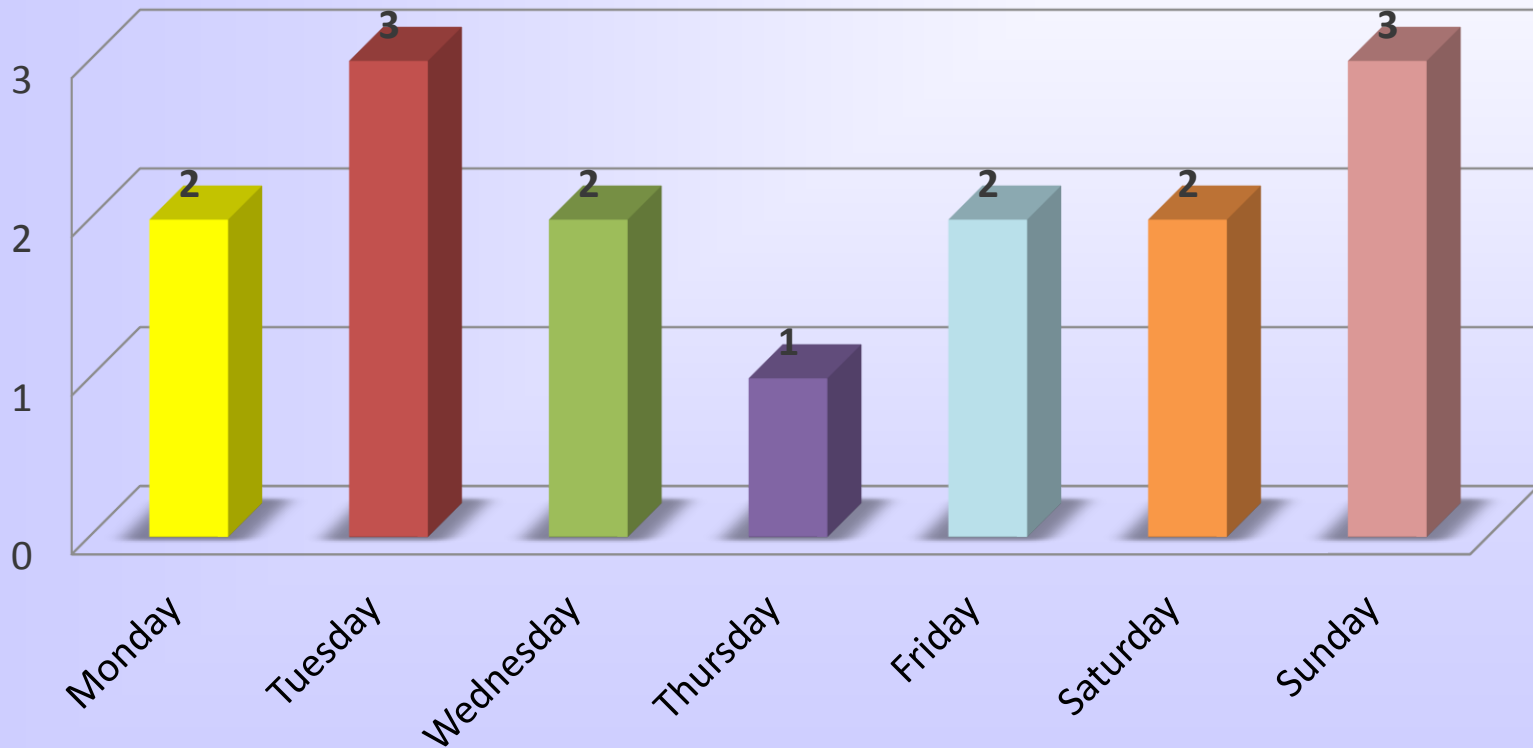
Santa Cruz County Juvenile Hall
Fights: Location



January 2010 - December 2011

SANTA CRUZ COUNTY JUVENILE HALL PERFORMANCE MEASURES

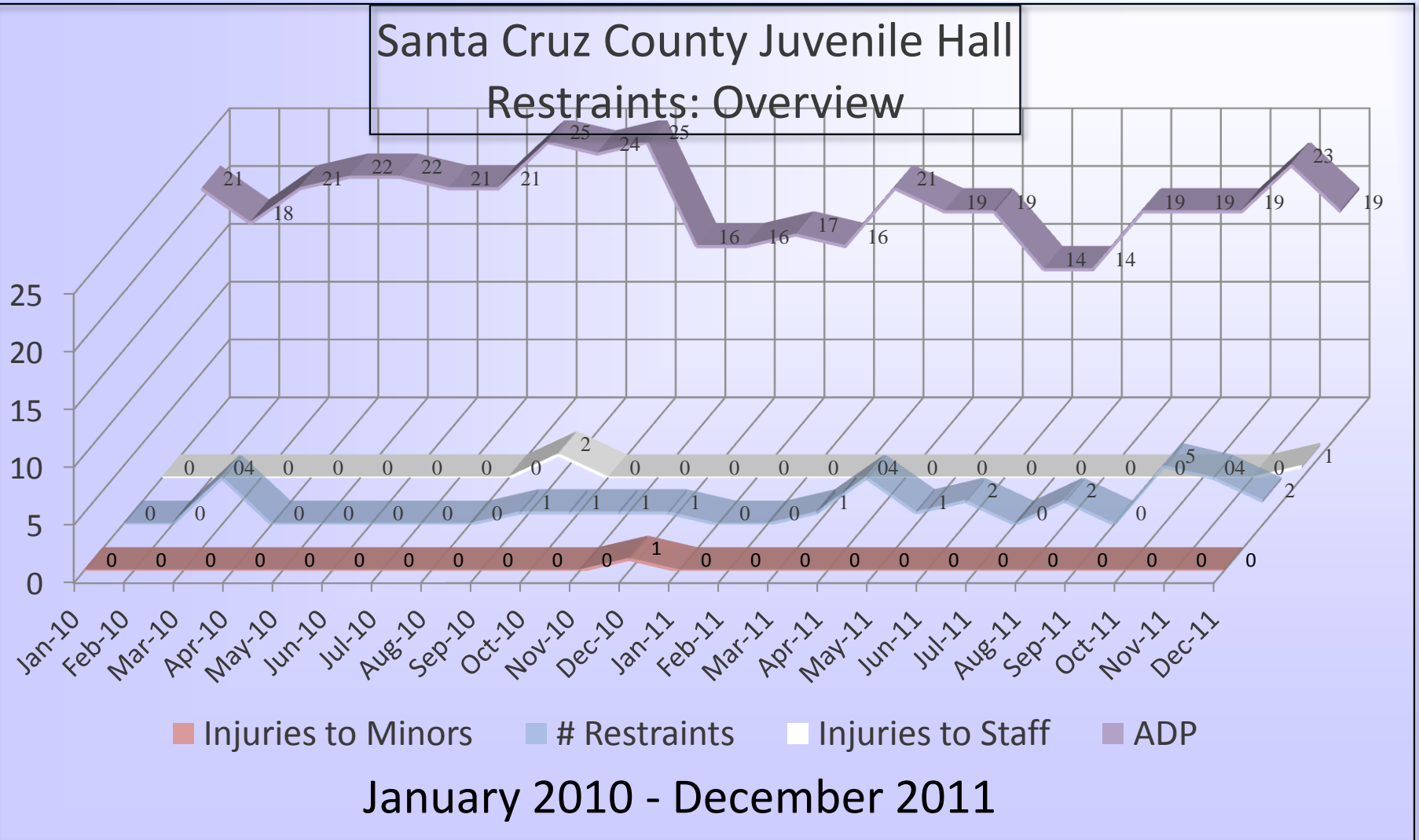
Santa Cruz County Juvenile Hall
Fights: Day of the Week



January 2010 - December 2011

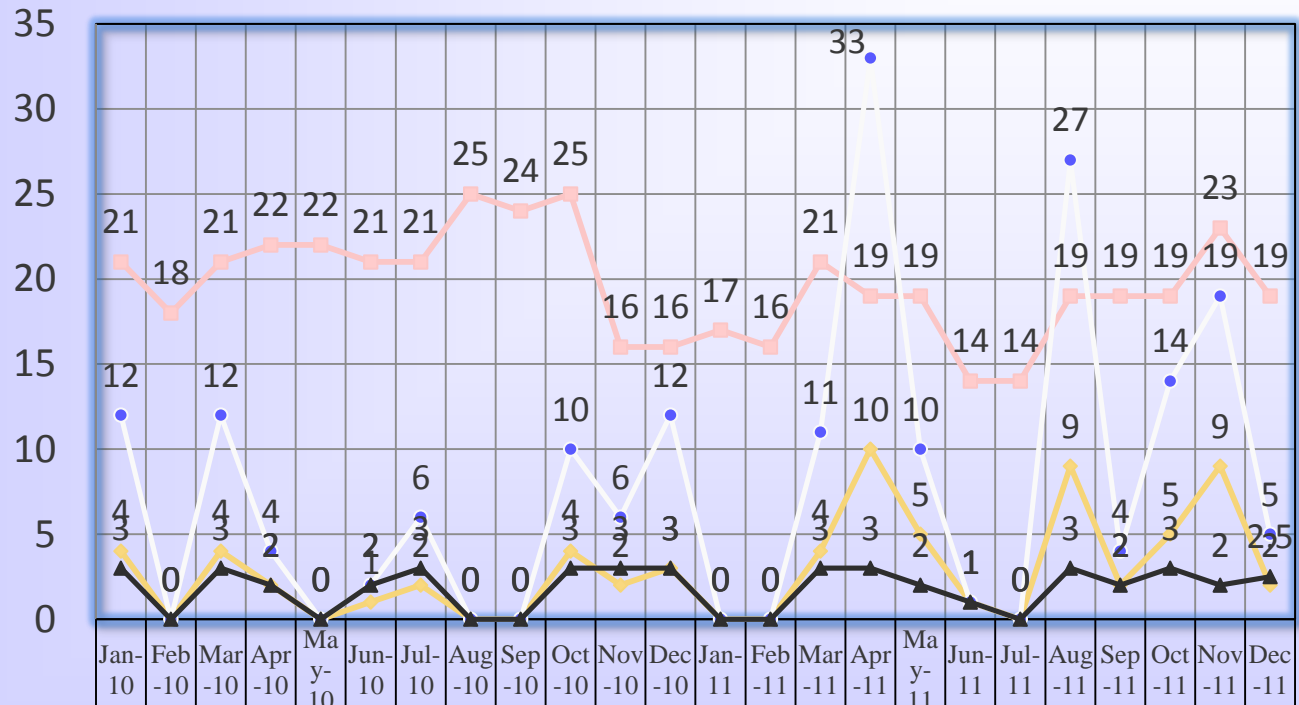
SANTA CRUZ COUNTY JUVENILE HALL PERFORMANCE MEASURES

Santa Cruz County Juvenile Hall
Restrains: Overview



SANTA CRUZ COUNTY JUVENILE HALL PERFORMANCE MEASURES

Santa Cruz County Juvenile Hall
Room Confinement: Overview

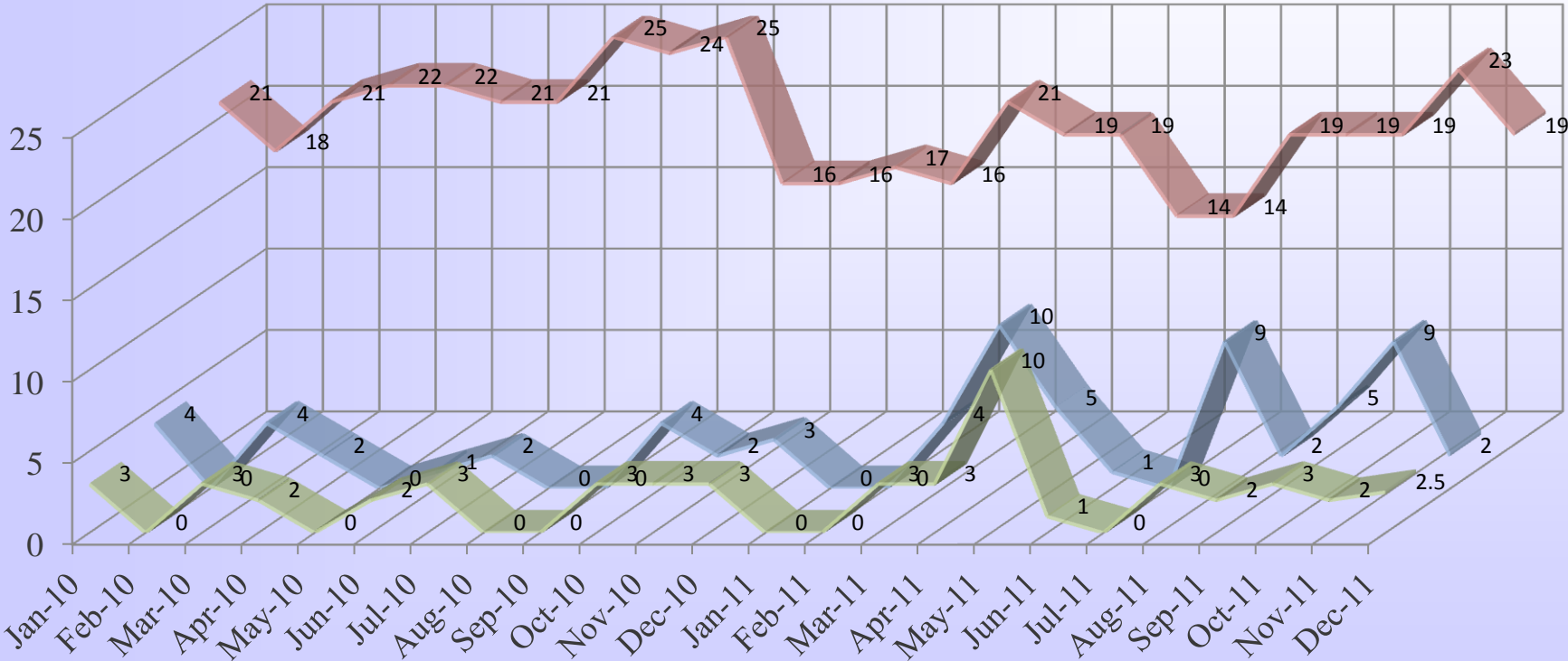


ADP	21	18	21	22	22	21	21	25	24	25	16	16	17	16	21	19	19	14	14	19	19	19	23	19
# Youth Incidents	4	0	4	2	0	1	2	0	0	4	2	3	0	0	4	10	5	1	0	9	2	5	9	2
Total # R/C Days for Month	12	0	12	4	0	2	6	0	0	10	6	12	0	0	11	33	10	1	0	27	4	14	19	5
Avg # R/C Days per Youth/Incident	3	0	3	2	0	2	3	0	0	3	3	3	0	0	3	3	2	1	0	3	2	3	2	2.5

January 2010 - December 2011

SANTA CRUZ COUNTY JUVENILE HALL PERFORMANCE MEASURES

Santa Cruz County Juvenile Hall
Avg R/C Days per Youth/Incident vs. Incidents

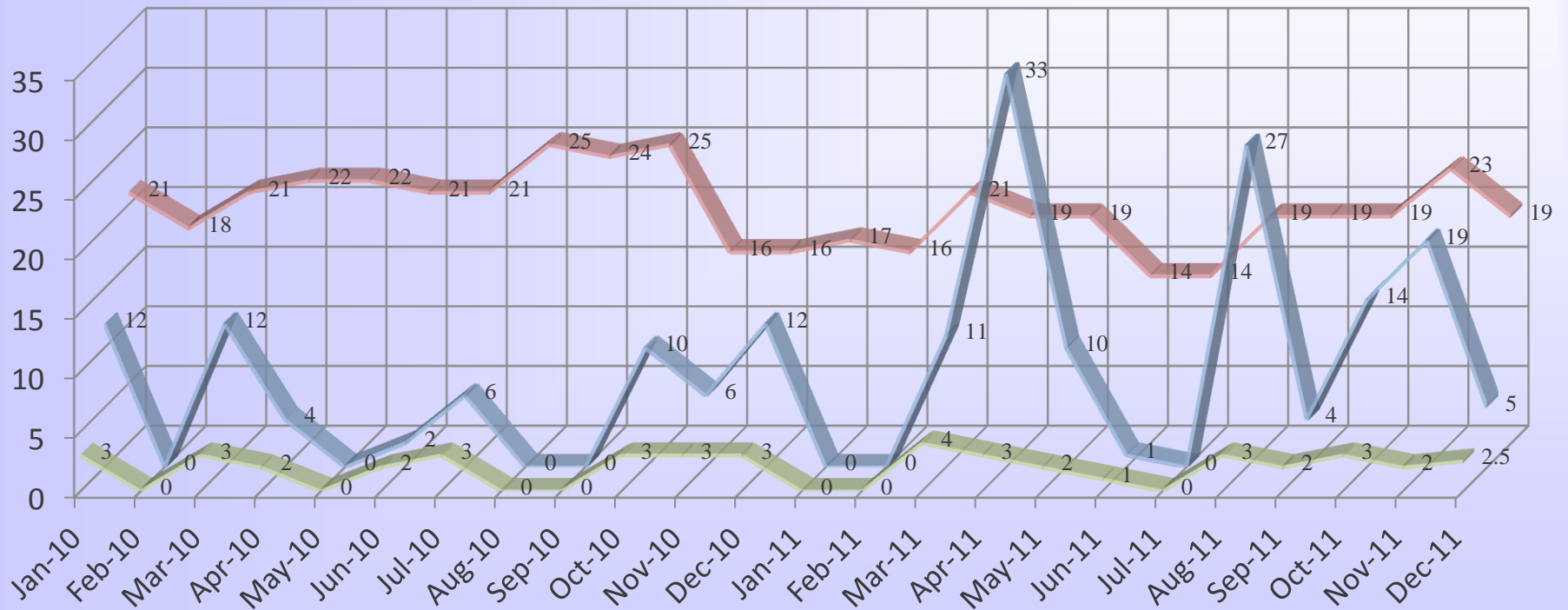


January 2010 - December 2011

■ Avg # R/C Days per Youth/Incident
 ■ # Youth Incidents
 ■ ADP

SANTA CRUZ COUNTY JUVENILE HALL PERFORMANCE MEASURES

Santa Cruz County Juvenile Hall
Avg R/C Days per Youth/Incident vs. R/C Days for Month

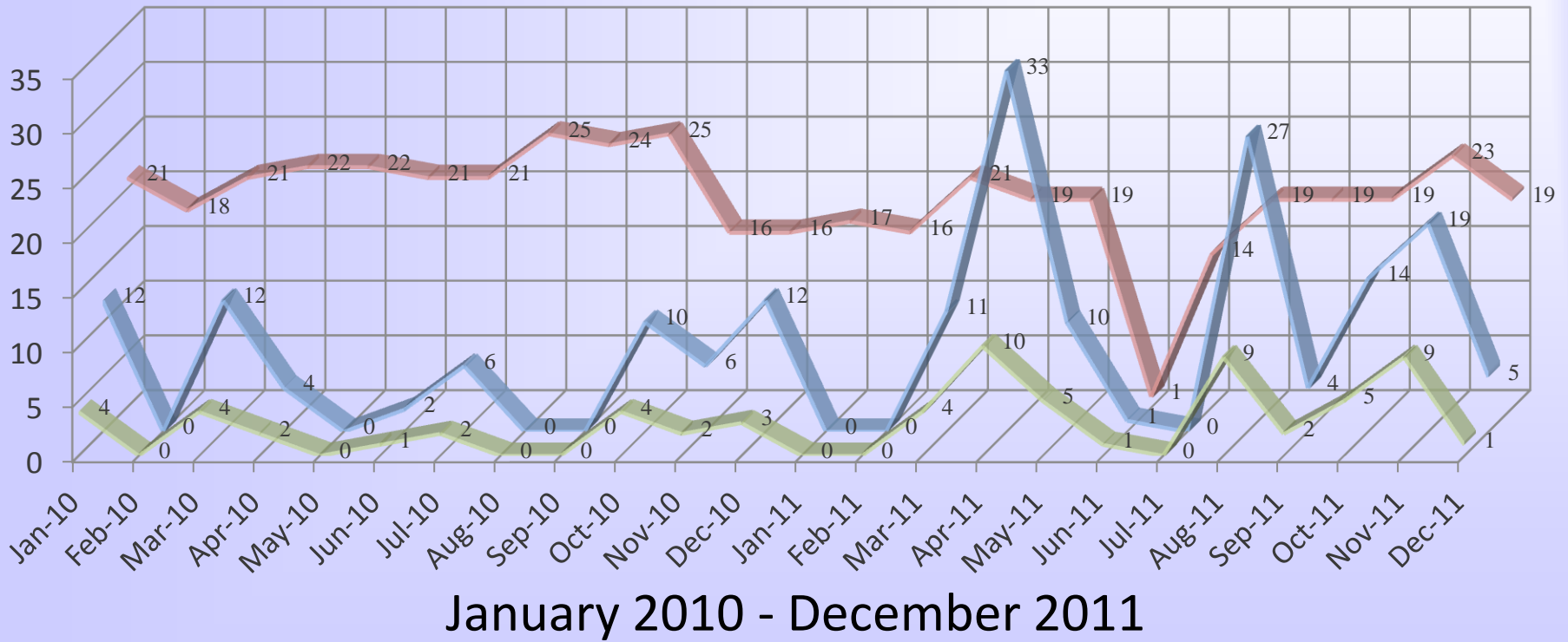


January 2010 - December 2011

■ Avg # R/C Days per Youth/Incident ■ Total # R/C Days for Month ■ ADP

SANTA CRUZ COUNTY JUVENILE HALL PERFORMANCE MEASURES

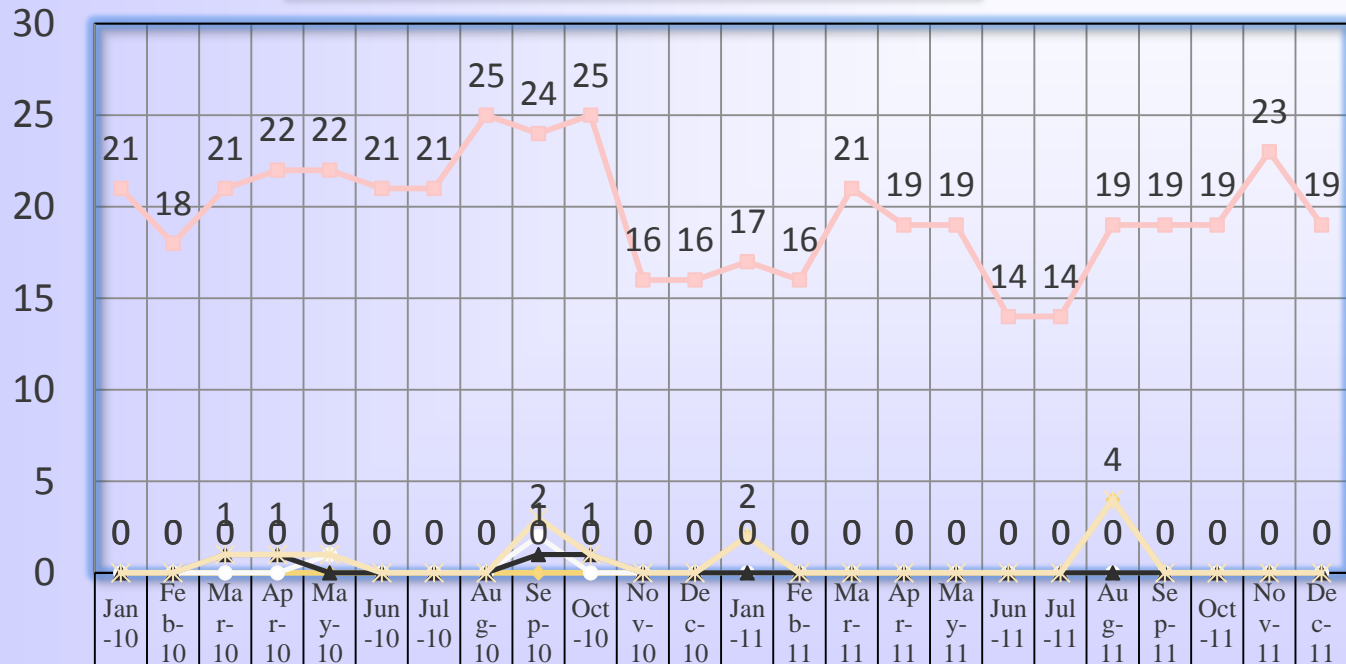
Santa Cruz County Juvenile Hall
Incidents vs. R/C Day for Month



■ # Youth Incidents ■ Total # R/C Days for Month ■ ADP

SANTA CRUZ COUNTY JUVENILE HALL PERFORMANCE MEASURES

Santa Cruz County Juvenile Hall
Grievances: Overview

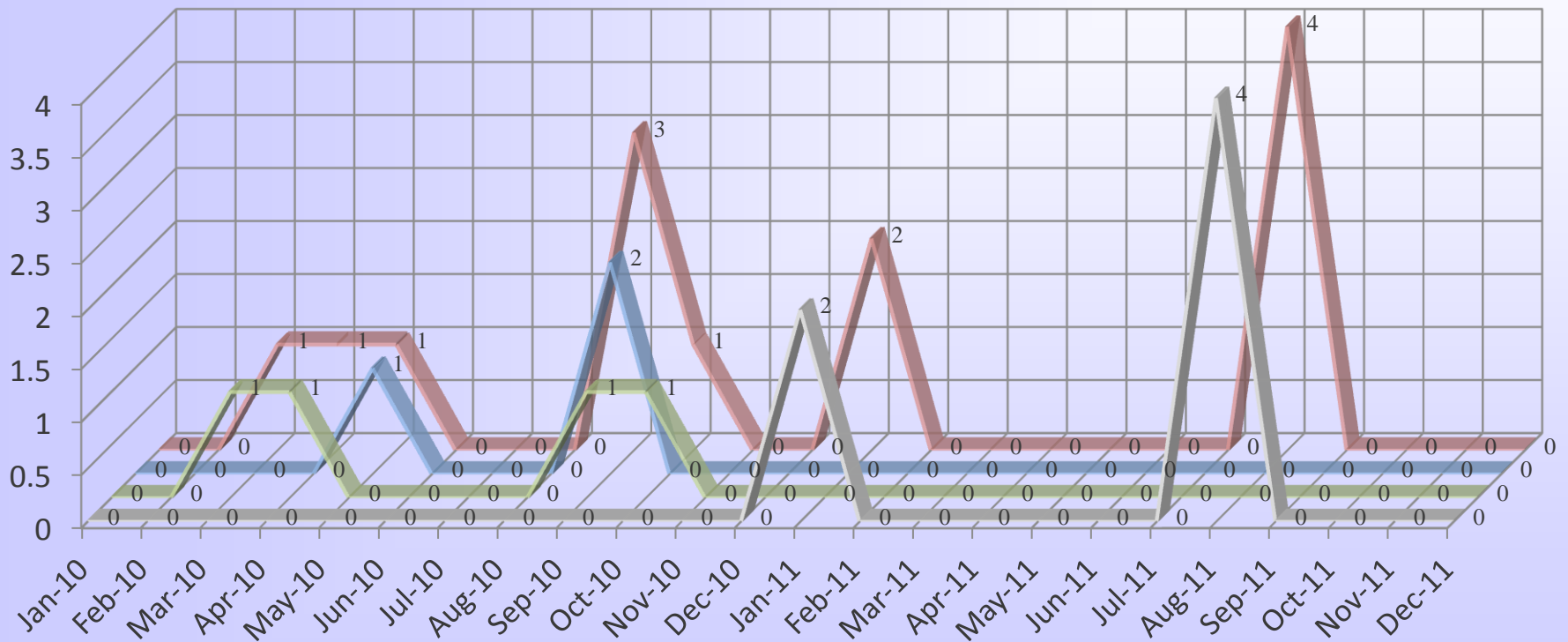


ADP	21	18	21	22	22	21	21	25	24	25	16	16	17	16	21	19	19	14	14	19	19	19	23	19
Conditions	0	0	0	0	0	0	0	0	0	0	0	0	2	0	0	0	0	0	0	4	0	0	0	0
Discipline	0	0	0	0	1	0	0	0	2	0	0	0	0	0	0	0	0	0	0	0	0	0	0	0
Staff/Policies	0	0	1	1	0	0	0	0	1	1	0	0	0	0	0	0	0	0	0	0	0	0	0	0
Total # Grievances	0	0	1	1	1	0	0	0	3	1	0	0	2	0	0	0	0	0	0	4	0	0	0	0

January 2010 - December 2011

SANTA CRUZ COUNTY JUVENILE HALL PERFORMANCE MEASURES

Santa Cruz County Juvenile Hall
Grievances

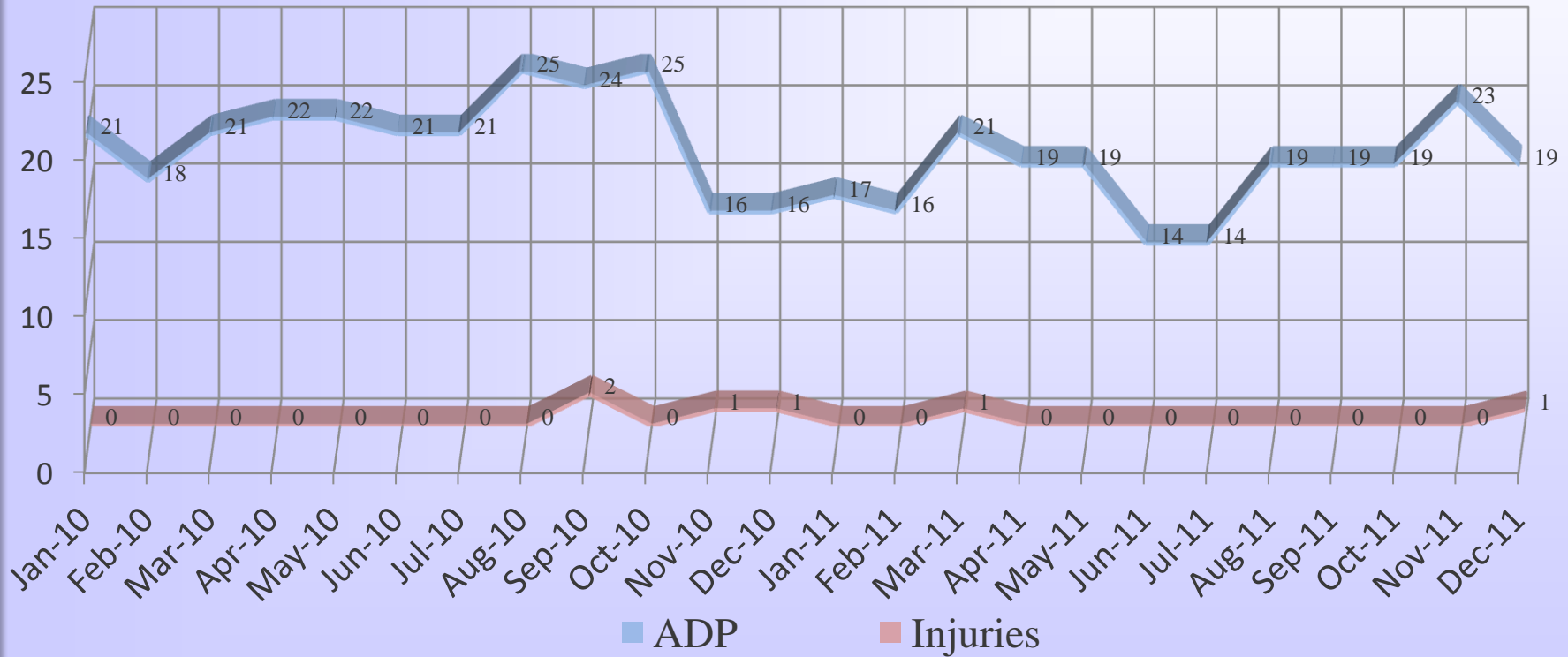


January 2010 - December 2011

■ Conditions
 ■ Staff/Policies
 ■ Discipline
 ■ Total # Grievances

SANTA CRUZ COUNTY JUVENILE HALL PERFORMANCE MEASURES

Santa Cruz County Juvenile Hall
Staff Injuries: Overview



January 2010 - December 2011