

# Addressing Disproportionate Minority Representation Within the Juvenile Justice System

Santa Cruz County Probation Department  
Santa Cruz, California



# Leadership

---

- Dedicate resources
- Staff recruitment
- Cultural competency plan
- Core work group
- Technical assistance



# Decision Points

---

- Map key decision points
- Collect data by ethnicity
- Monitor data regularly
- Use data to improve process



# SANTA CRUZ COUNTY DISPROPORTIONATE MINORITY DATA

---

- Court Aged Youth General Population
- Arrests / Citations
- Detention Center Bookings
- Detentions
- Average Daily Population
- Petitions Filed
- Detention Alternatives
- Success Rates – Detention Alternatives
- Length Of Stay
- Length Of Court / Placement Process
- Post Dispositional Programs
- Commitments To Institutions

# Objective Criteria For Decisions

---

- Risk based detention criteria
- Criteria for use of detention alternatives
- Criteria for use of intensive supervision
- Criteria for use of placement
- Monitor outcomes



# Develop Full Continuum of Services

---

- Culturally competent
- Research-based
- Monitor access and outcomes
- Customer surveys



# DMC Work Plan Checklist

---

- Stated administrative value
- Working group charged with outcomes and goals
- Cultural competence coordinator
- Regular cultural competence training
- Staff reflects bilingual, bicultural levels of client base
- Key positions have bilingual staff
- Key decision points mapped
- Data available for each decision point



# DMC Work Plan Checklist

---

- Quarterly review of decision-point data (trends)
- Customer surveys identify service barriers
- Parental involvement at all levels
- Detention alternatives with community partners and more than one level of alternative
- Tracking outcomes of alternatives by ethnicity
- Risk-based detention criteria without racial bias
- Stakeholders involved in development of risk assessment instrument

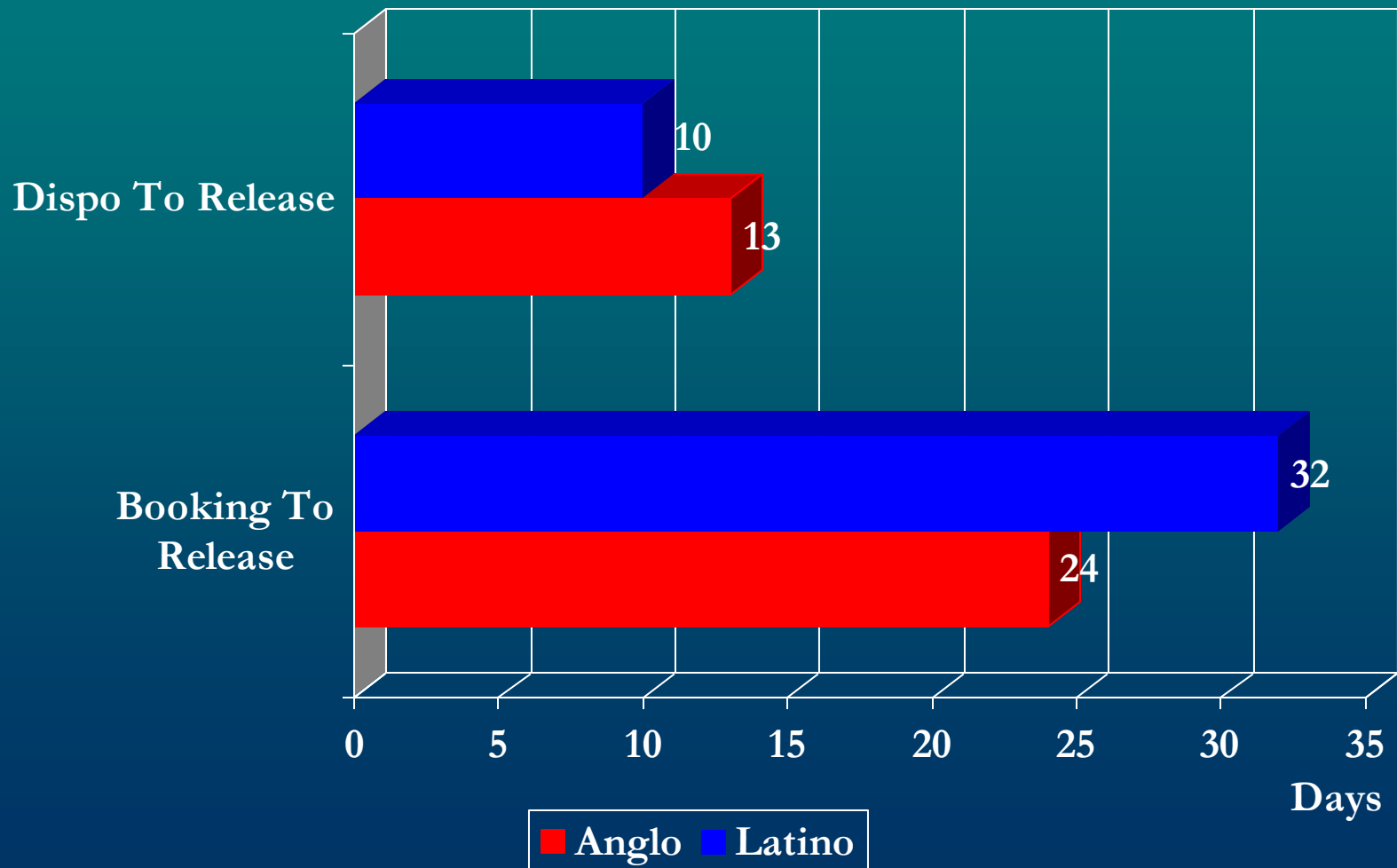
# DMC Work Plan Checklist

---

- Efficient court and placement system with short length of stay in detention-measure length of stay by ethnicity
- Clear criteria for assignment to intensive caseloads
- Clear criteria for removal from intensive caseloads
- Administrative sanctions for probation violations
- Sufficient diversion options
- Extensive graduated continuum of services with wraparound services and community partners
- Culturally competent residential programs

# Average Length Of Stay 2011

## All Youth Pending Placement



# Map of Juvenile Justice Decision Points

## Level I

### Agency

### Decision Points

Local law enforcement

Field deployment of personnel

Probation department

Intensive caseload assignments

## Level II

### Agency

### Decision Points

Local law enforcement

Decision to warn or divert *or* Cite and release *or* Arrest

Probation department

*If a probation violation:*  
Administrative sanction or arrest

## Level III

### Agency

### Decision Points

Juvenile hall staff

Immediate release following booking *or*  
Hold for intake probation officer

# Map of Juvenile Justice Decision Points

---

## Level IV

---

### Agency

---

Probation Intake

### Decision Points

---

Release to parent/other agency *or* Release directly to home supervision *or* Hold in custody for detention hearing

---

## Level V

---

### Agency

---

District attorney

### Decision Points

---

No file *or*

File *or*

Order further investigation

---

*If petition is filed:*

Decision re:type and number of offenses charged

Decision to recommend or oppose release to a detention alternative

Decision on plea agreements

---

# Map of Juvenile Justice Decision Points

---

## Level VI

---

### Agency

---

### Decision Points

---

Probation Department

*At detention hearing:*

Recommend or oppose detention alternatives

Recommend home supervision or electronic monitoring

---

## Level VII

---

### Agency

---

### Decision Points

---

Public defender and defense advocates

Active only on legal aspects of defense *or*  
Employs defense advocates to actively fashion release and dispositional plans with parents, relatives, and programs

---

# Map of Juvenile Justice Decision Points

---

## Level VIII

---

### Agency

---

### Decision Points

---

#### Court

Decision to release

Decision to utilize home supervision

Decision to utilize electronic monitoring

Decision on conditions of release

Decisions on extensions of jurisdictional time frames

Dispositional decisions

Decisions on probation violations

---

## Level IX

---

### Agency

---

### Decision Points

---

#### Probation Department

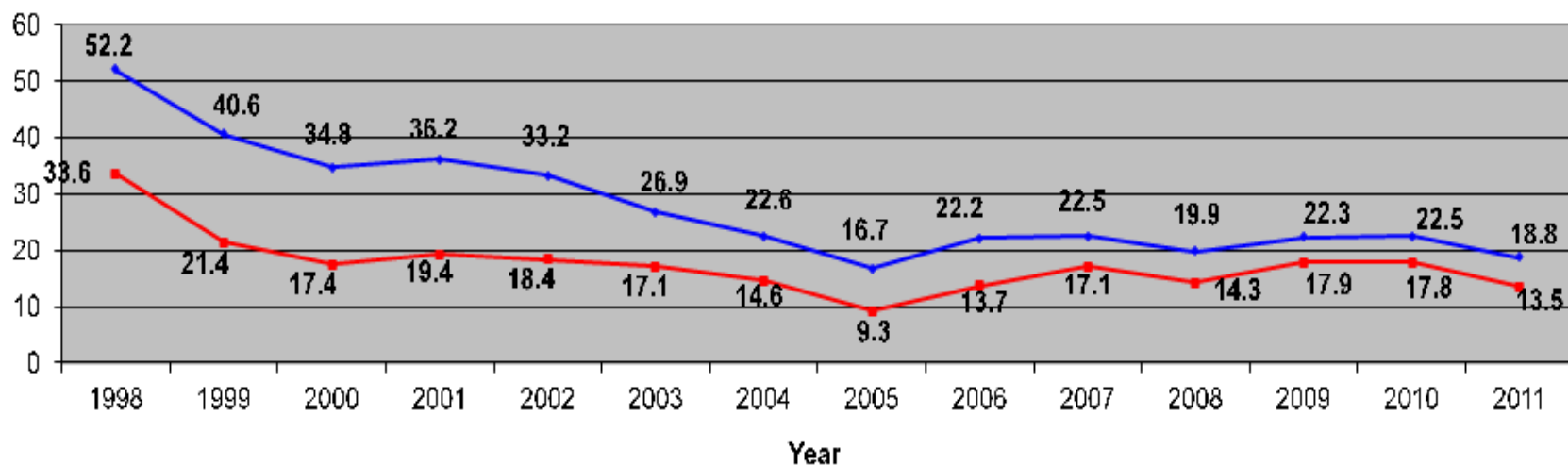
Placement and dispositional options

---

# SANTA CRUZ COUNTY JUVENILE HALL LATINO YOUTH AVERAGE DAILY POPULATION 1998 - 2011

DISPROPORTIONATE MINORITY CONFINEMENT  
SANTA CRUZ COUNTY JUVENILE HALL  
1998 - 2011

### Latino Compared to Overall Average Daily Population



	1998	1999	2000	2001	2002	2003	2004	2005	2006	2007	2008	2009	2010	2011
Juvenile Hall Capacity	42	42	42	42	42	42	42	42	42	42	42	42	42	42
% Of Latino Youth Detained	64.3%	52.9%	50.0%	53.6%	55.3%	63.5%	64.8%	54.8%	58.1%	64.0%	65.4%	75.5%	80.0%	71.0%
Juvenile Hall Average Daily Population	52.2	40.6	34.8	36.2	33.2	26.9	22.6	16.7	22.2	22.5	19.9	22.3	22.5	18.8
Latino Youth Juvenile Hall Average Daily Population	33.6	21.4	17.4	19.4	18.4	17.1	14.6	9.3	13.7	17.1	14.3	17.9	17.8	13.5

# Results in Santa Cruz

---

- Latino youth – 33%, ages 10 – 17, 1997
- Detained – 64% Latino, 1997 and 1998
- Arrests/citations – 31% Latino, 1999
- Booked – 47% Latino, 2000
- Detained – 50% Latino, 2000
- Reduction of 14%



# RESOURCES

---

- ANNIE E. CASEY FOUNDATION

- ✓ [www.aecf.org](http://www.aecf.org)

- ROBERT WOOD JOHNSON FOUNDATION

- ✓ [www.reclaimingfutures.org](http://www.reclaimingfutures.org)

- JUDICIAL COUNCIL OF CALIFORNIA

- ✓ [www.courtinfo.ca.gov/programs/cfcc/resources/publications/journal](http://www.courtinfo.ca.gov/programs/cfcc/resources/publications/journal)

- BUILDING BLOCKS FOR YOUTH

- ✓ [www.buildingblocksforyouth.org](http://www.buildingblocksforyouth.org)