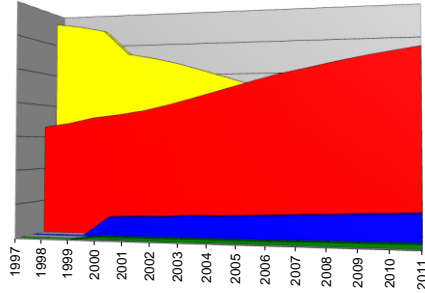


**SANTA CRUZ COUNTY
MINORITY REPRESENTATION IN THE JUVENILE JUSTICE SYSTEM
1997 - 2011**

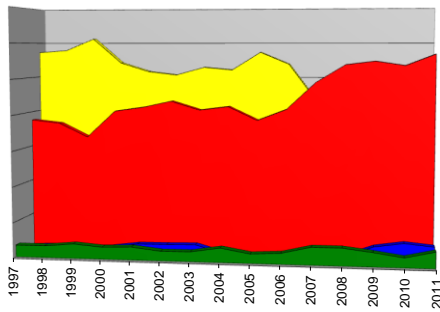
Juvenile Population (Ages 10-17) Santa Cruz County %

	1997	1998	1999	2000	2001	2002	2003	2004	2005	2006	2007	2008	2009	2010	2011
Latino	33.1%	34.2%	35.9%	36.8%	38.0%	39.8%	41.9%	44.1%	46.3%	48.4%	50.0%	51.7%	53.2%	54.5%	55.7%
Anglo	66.9%	65.8%	64.1%	56.5%	55.0%	53.1%	50.7%	48.2%	45.7%	43.2%	41.3%	39.3%	37.4%	35.8%	34.3%
African American	n/a	n/a	n/a	0.9%	0.9%	0.9%	1.0%	1.0%	1.0%	1.0%	1.1%	1.2%	1.2%	1.3%	1.3%
Other	n/a	n/a	n/a	5.8%	6.1%	6.2%	6.7%	6.7%	7.0%	7.3%	7.6%	7.8%	8.2%	8.4%	8.7%
Total	100.0%	100%	100%	100%	100%	100%	100%	100%	100%	100%	100%	100%	100%	100%	100%



Arrests

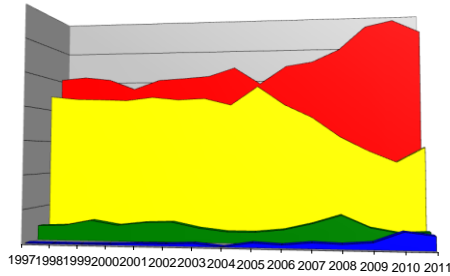
	1997	1998	1999	2000	2001	2002	2003	2004	2005	2006	2007	2008	2009	2010	2011
Latino	37.6%	36.7%	32.8%	40.4%	41.6%	43.4%	40.9%	41.9%	38.1%	41.3%	49.0%	54.0%	55.0%	53.8%	57.0%
Anglo	57.2%	57.8%	61.2%	54.2%	51.7%	50.7%	53.0%	52.2%	57.4%	54.0%	43.0%	40.0%	37.0%	35.2%	34.0%
African American	3.4%	3.4%	4.1%	3.4%	3.7%	2.8%	2.8%	4.1%	2.7%	3.1%	5.0%	5.0%	4.0%	2.8%	4.6%
Other	1.8%	2.1%	1.9%	2.0%	3.1%	3.1%	3.3%	1.0%	0.9%	1.1%	3.0%	1.0%	4.0%	5.2%	4.4%
Total	100.0%	100.0%	100.0%	100.0%	100.0%	100.0%	100.0%	99.3%	99.0%	99.4%	100.0%	100.0%	100.0%	100.0%	100.0%



SANTA CRUZ COUNTY
MINORITY REPRESENTATION IN THE JUVENILE JUSTICE SYSTEM
1997 - 2011

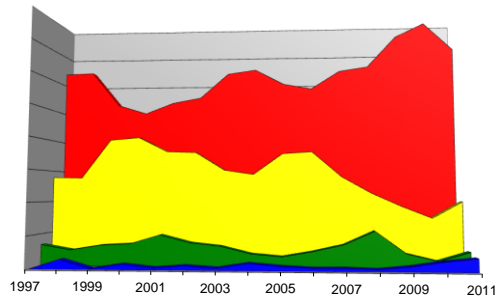
Booked into Juvenile Hall

	1997	1998	1999	2000	2001	2002	2003	2004	2005	2006	2007	2008	2009	2010	2011
Latino	50.6%	51.3%	50.4%	47.2%	50.0%	50.5%	51.1%	53.7%	48.5%	53.9%	55.2%	58.9%	66.0%	67.8%	64.0%
Anglo	44.3%	43.4%	43.2%	42.8%	43.8%	42.9%	43.2%	41.1%	46.7%	41.0%	37.1%	31.2%	27.0%	23.6%	28.0%
African American	4.3%	4.5%	6.1%	4.7%	5.6%	5.9%	4.2%	3.3%	3.3%	4.1%	6.0%	8.5%	5.0%	3.6%	4.0%
Other	0.3%	0.3%	0.2%	0.4%	0.6%	0.6%	0.9%	0.1%	1.4%	0.9%	1.7%	1.4%	2.0%	5.0%	4.0%
Total	99.4%	99.4%	99.8%	95.1%	100.0%	99.9%	99.5%	98.3%	99.9%	100.0%	100.0%	100.0%	100.0%	100.0%	100.0%



Detained in Juvenile Hall

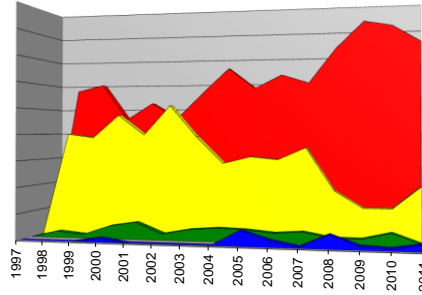
	1997	1998	1999	2000	2001	2002	2003	2004	2005	2006	2007	2008	2009	2010	2011
Latino	64.0%	64.3%	52.9%	50.0%	53.6%	55.3%	63.5%	64.8%	59.8%	58.1%	64.0%	65.4%	75.5%	80.0%	71.0%
Anglo	27.9%	27.7%	40.2%	41.0%	36.3%	36.0%	30.2%	28.8%	35.5%	36.1%	28.0%	22.7%	18.5%	14.8%	20.0%
African American	6.6%	5.0%	6.5%	7.0%	9.8%	7.4%	6.4%	4.1%	3.3%	4.9%	7.0%	11.2%	4.4%	2.2%	5.0%
Other	0.0%	3.0%	0.3%	1.7%	0.7%	1.4%	0.8%	2.2%	1.4%	0.9%	1.0%	0.7%	1.6%	3.0%	4.0%
Total	98.5%	100.0%	99.9%	99.7%	100.4%	100.1%	100.9%	99.9%	100.0%	100.0%	100.0%	100.0%	100.0%	100.0%	100.0%



**SANTA CRUZ COUNTY
MINORITY REPRESENTATION IN THE JUVENILE JUSTICE SYSTEM
1997 - 2011**

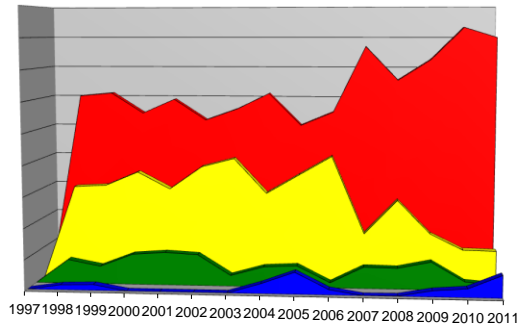
Placement Prevention Services

	1997	1998	1999	2000	2001	2002	2003	2004	2005	2006	2007	2008	2009	2010	2011
Latino	NA	57.6%	60.0%	45.9%	52.4%	46.3%	56.5%	66.1%	58.1%	63.3%	60.0%	73.4%	83.5%	81.6%	75.3%
Anglo	NA	40.0%	38.6%	47.5%	39.7%	51.2%	39.1%	28.8%	31.4%	30.4%	35.0%	18.9%	12.6%	12.6%	21.0%
African American	NA	2.4%	1.4%	4.9%	6.5%	2.4%	4.3%	5.1%	4.8%	3.8%	4.5%	2.6%	2.5%	4.9%	1.2%
Other	NA	0.0%	0.0%	1.6%	0.0%	0.0%	0.0%	0.0%	5.7%	2.5%	0.5%	5.1%	1.4%	0.9%	2.5%
Total	NA	100.0%	100.0%	99.9%	98.6%	99.9%	99.9%	100.0%	100.0%	100.0%	100.0%	100.0%	100.0%	100.0%	100.0%



Group Homes

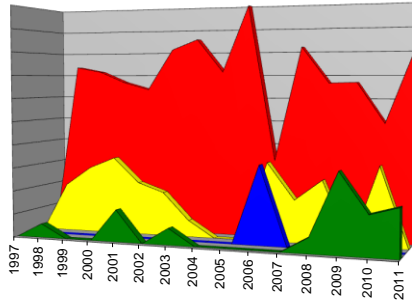
	1997	1998	1999	2000	2001	2002	2003	2004	2005	2006	2007	2008	2009	2010	2011
Latino	NA	60.2%	61.2%	54.5%	59.2%	52.3%	56.1%	61.3%	50.7%	55.17%	77.0%	65.9%	72.7%	83.3%	80.0%
Anglo	NA	30.5%	31.1%	35.6%	30.1%	37.6%	40.4%	29.0%	35.2%	41.38%	16.0%	27.2%	16.3%	11.1%	10.9%
African American	NA	7.8%	5.8%	9.9%	10.7%	10.1%	3.5%	6.5%	7.0%	1.72%	7.0%	6.8%	9.0%	2.8%	1.9%
Other	NA	1.6%	1.9%	0.0%	0.0%	0.0%	0.0%	3.2%	7.0%	1.72%	0.0%	0.1%	2.0%	2.8%	7.2%
Total	NA	100.1%	100.0%	100.0%	100.0%	100.0%	100.0%	100.0%	100.0%	100.0%	100.0%	100.0%	100.0%	100.0%	100.0%



**SANTA CRUZ COUNTY
MINORITY REPRESENTATION IN THE JUVENILE JUSTICE SYSTEM
1997 - 2011**

Ranch Camp

	1997	1998	1999	2000	2001	2002	2003	2004	2005	2006	2007	2008	2009	2010	2011
Latino	NA	73.5%	71.4%	66.7%	63.6%	81.3%	85.7%	71.4%	100.0%	33.3%	82.0%	66.7%	67.0%	50.0%	80.0%
Anglo	NA	20.6%	28.6%	33.3%	22.7%	18.8%	7.1%	0.0%	0.0%	33.3%	18.0%	26.7%	0.0%	33.3%	0.0%
African American	NA	5.9%	0.0%	0.0%	13.6%	0.0%	7.1%	0.0%	0.0%	0.0%	0.0%	6.6%	33.0%	16.7%	20.0%
Other	NA	0.0%	0.0%	0.0%	0.0%	0.0%	0.0%	0.0%	0.0%	33.3%	0.0%	0.0%	0.0%	0.0%	0.0%
Total	NA	100.0%	100.0%	100.0%	99.9%	100.1%	99.9%	71.4%	100.0%	99.9%	100.0%	100.0%	100.0%	100.0%	100.0%



DJJ

	1997	1998	1999	2000	2001	2002	2003	2004	2005	2006	2007	2008	2009	2010	2011
Latino	NA	84.6%	83.3%	33.3%	37.5%	50.0%	66.7%	100.0%	0.0%	0.0%	100.0%	100.0%	100.0%	100.0%	100.0%
Anglo	NA	15.4%	16.7%	66.7%	50.0%	0.0%	33.3%	0.0%	0.0%	100.0%	0.0%	0.0%	0.0%	0.0%	0.0%
African American	NA	0.0%	0.0%	0.0%	12.5%	50.0%	0.0%	0.0%	0.0%	0.0%	0.0%	0.0%	0.0%	0.0%	0.0%
Other	NA	0.0%	0.0%	0.0%	0.0%	0.0%	0.0%	0.0%	0.0%	0.0%	0.0%	0.0%	0.0%	0.0%	0.0%
Total	NA	100.0%	100.0%	100.0%	100.0%	100.0%	100.0%	100.0%	0.0%	100.0%	100.0%	100.0%	100.0%	100.0%	100.0%

